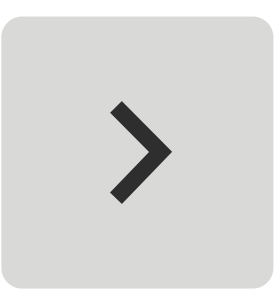
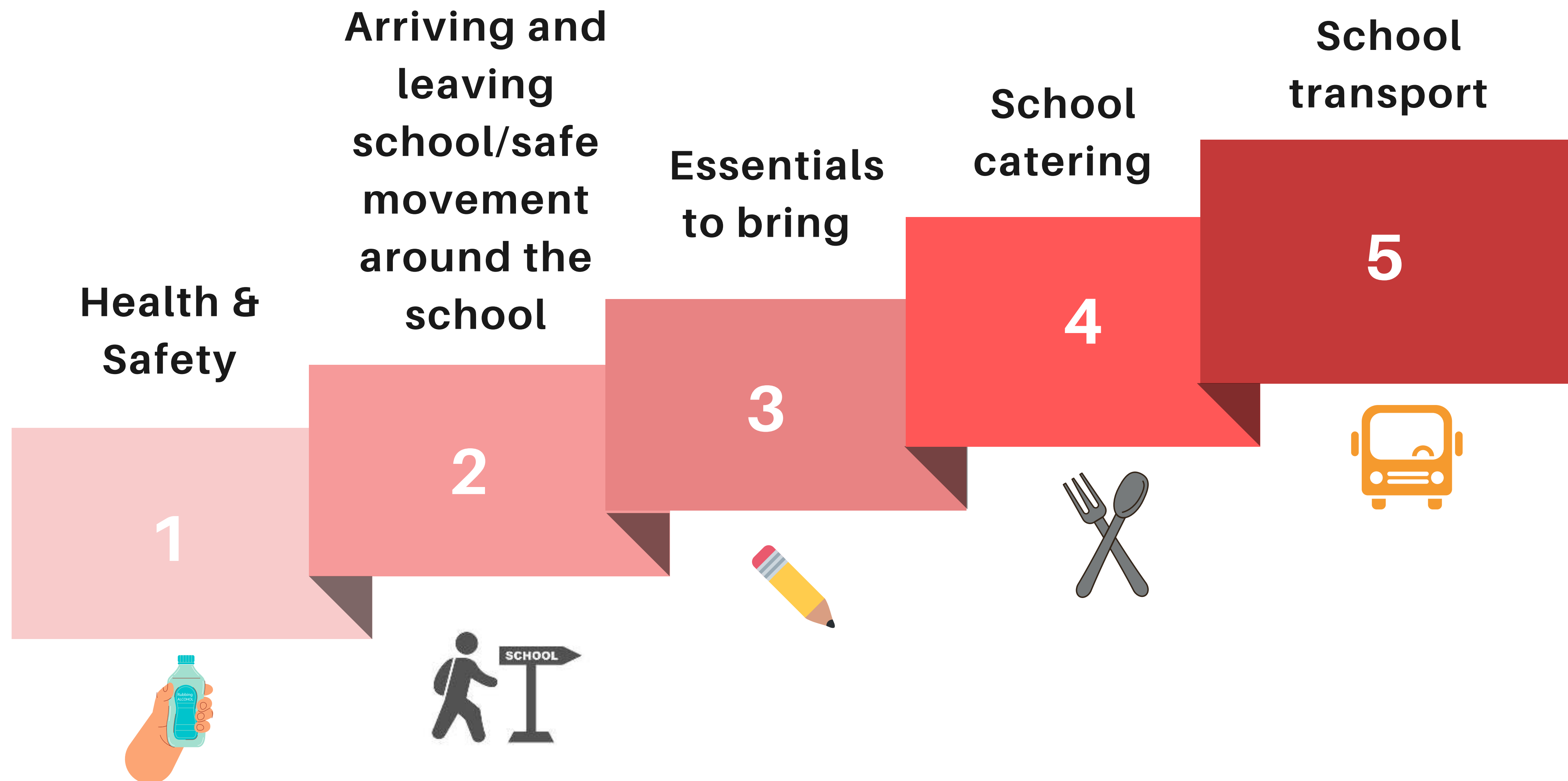


Roadmap back to school

We all look forward to welcoming you back to school. There are a number of things we all need to do to keep ourselves and others healthy and safe.





1

Health & Safety



Please do not come to school if you, or any person in your household has the following symptoms

- new continuous cough
 - fever or high temperature
 - loss of, or change in, sense of smell or taste
-
- You will be asked three questions every morning about your health and the health of the people you live with. Please be honest when you answer.
 - Sanitise your hands when you enter the school building, and when you enter or leave each classroom.
 - Wash your hands thoroughly for at least 20 seconds after using the toilet.
 - Clean your desk/work station/ equipment before you leave your classroom - Spray and wipes will be provided.
 - Cough into a tissue or the crook of your elbow.
 - Keep 2 metres away from all members of staff.
 - Try to keep your distance from other young people as much as possible.
 - Tell a teacher or other adult if you feel unwell.



Arriving and leaving school/safe movement around the school ²

To minimise the amount of movement around school registration will take place during your period 1 class.

- **If you arrive by school transport**, enter the school building and **go to your period 1 class** when the hurry bell rings at 8.35 am.
- You should be in class by the second bell at 8.40 am
- **If you do not travel on school transport**, please come in time for the 8.45 am hurry bell and **go to your period 1 class** by the 8.50 am bell.
- At the end of the school day a bell will ring at 3.20 pm. This is a signal for teachers to allow non school transport pupils to leave school for the day.
- Another bell will ring at 3.25 pm. This is a signal for teachers to allow school transport pupils to leave school.
- Pupils travelling to school by car should be dropped off in Dennyduff Road or Alexandra Terrace. Parent/carer cars are not permitted on drive.
- **Please use the outdoor corridor as much as possible to move from class to class.**
- Three extra entrances/exits have been created for you to use in addition to the main pupil doors. The extra doors are situated at the back of the library, at Music and the gates at Maths will be open. Please use the nearest available door.
- All pupils and staff are asked to keep to the left in all corridors in school.



3

Essentials items to bring each day



Essential Items to bring

- Pen
- Pencil
- Rubber
- Ruler
- Calculator
- Hand sanitiser
- PE kit
- Coloured pens/pencils (optional)

If you are not able to bring these items to school please see your Guidance Teacher who will be able to help you.



School catering

4

- The school canteen will provide their normal service, and meals and snacks will be available for purchase in the school canteen and social area as usual.
- School Catering Services look forward to welcoming all pupils back and have been working hard behind the scenes to offer an innovative way to provide school lunches.
- It is their intention to have in place by the start of the new term a new ordering App. This App will enable pupils to pre-order their lunch and collect it from collection points within the school. This will allow for us to cut down queues in the canteen and social area.
- More information regarding the App will be sent to you soon.
- If you choose to leave the school grounds at lunchtime and visit local shops and food outlets please remember to follow the rules and sanitise your hands and wear a face covering when entering a shop. You will have to sanitise your hands before coming back into the school building.

5

School transport



If your travel to school on school transport please read this information carefully.

- To improve air circulation windows and skylights will be left open.
- The vehicle will have been thoroughly cleaned
- Your driver will be wearing a face covering.
- At some pick-up points you may be required to stand back when the vehicle arrives to allow the driver to exit the vehicle and open the passenger
- Front seats will not be used to enable pupils to distance from the driver, unless the bus or coach is fitted with a screen.
- You may be given your own seat which you should always use.
- Pupils from the same household may be asked to sit together.
- Pupils travelling on school buses do not need to wear face coverings, unless clinically advised to do so, but they may be worn if you prefer.
- Pupils travelling on school taxis and private hire cars must wear a face covering unless medically exempt.
- Make sure you wash or sanitise your hands, before getting on the school bus in the morning. You may carry sanitiser on the bus but you should be careful not to spill it on the vehicle floor.
- Please do not eat or share food or drink on school transport.
- If you travel in a taxi or private hire car, make sure that they are wearing a face mask before boarding the vehicle