

# Return to School for pupils April 2021



Health and  
Safety



Arrival and  
Exit



In School



Catering



Transport

# Health and Safety



**Please do not come to school if you, or any person in your household has any of the following symptoms:**

- new continuous cough
- fever or high temperature
- loss of, or change in, sense of smell or taste

**Please follow all Health and Safety protocols**

- Face coverings should be worn by all pupils when in the building unless exempt (Please discuss with your PTG).
- Sanitise your hands when you enter and leave the school building, and when you enter or leave each classroom.
- Wash your hands thoroughly for at least 20 seconds after using the toilet (use the nearest toilet your classroom, ask your teacher if you are unsure).
- Clean your desk/work station/ equipment before you leave your classroom - Spray and wipes will be provided.
- Cough into a tissue or the crook of your elbow.
- Keep 2 metres distance from staff.
- Tell a teacher or other adult if you feel unwell.

# Arrival and Exit



## Bus pupils:

In order to allow staff to prepare for the day it's important that pupils adhere to the school bells. When the weather is nice please make use of our outdoor space. If the weather does not allow you to stay outside please wait in the social spaces around the school - assembly hall, social area and canteen. When the hurry bell rings at 8.35am make your way to your period 1 class, you should be in class by the second bell at 8.40 am.

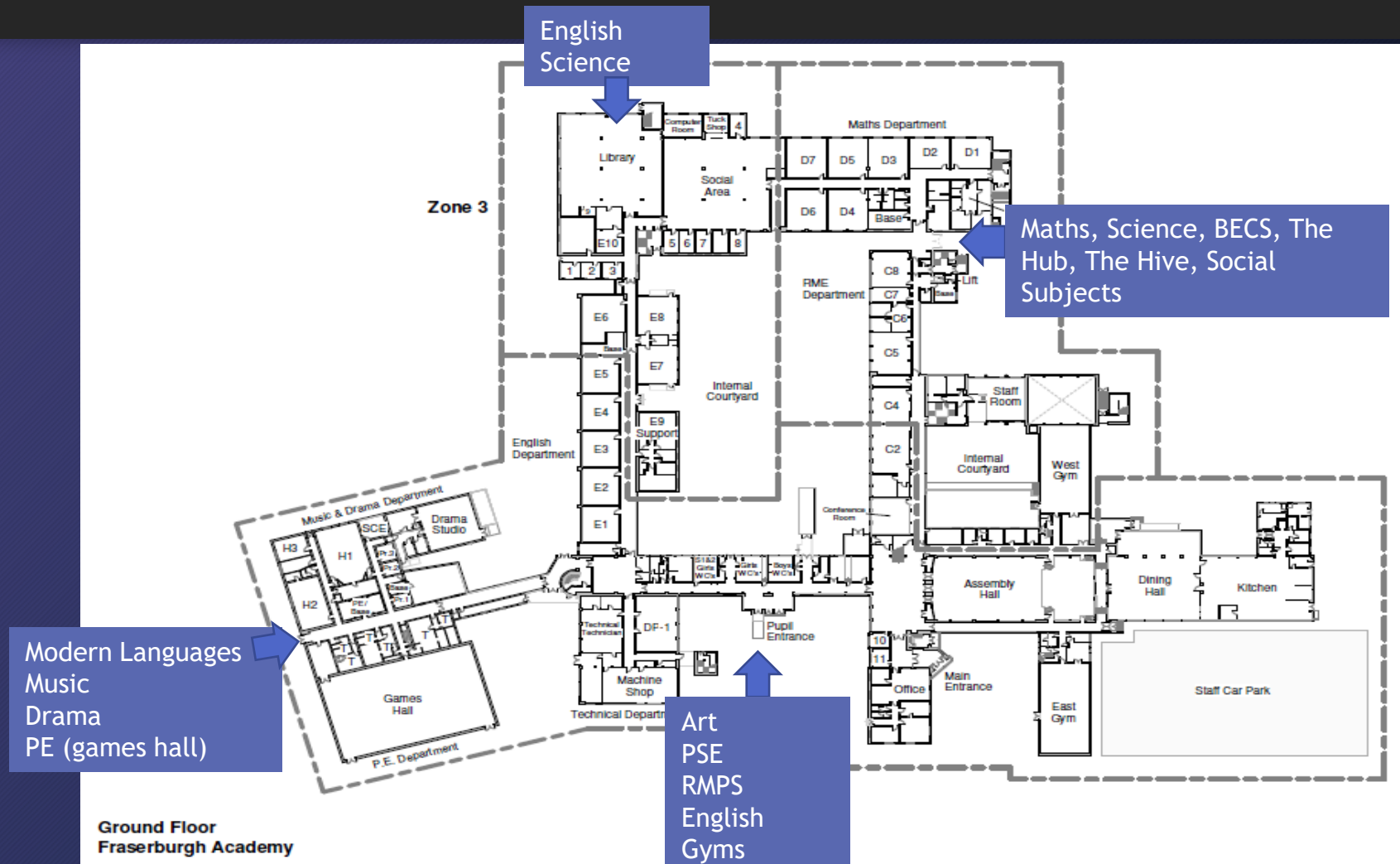
## Non bus pupils:

Please arrive in time for the 8.45am hurry bell and **go directly** to your period 1 class, you should be there by the 8.50 am bell. Pupils travelling to school by car should be dropped off/picked up in Dennyduff Road or Alexandra Terrace. Parent/carer cars are not permitted on drive.

## Staggered releases:

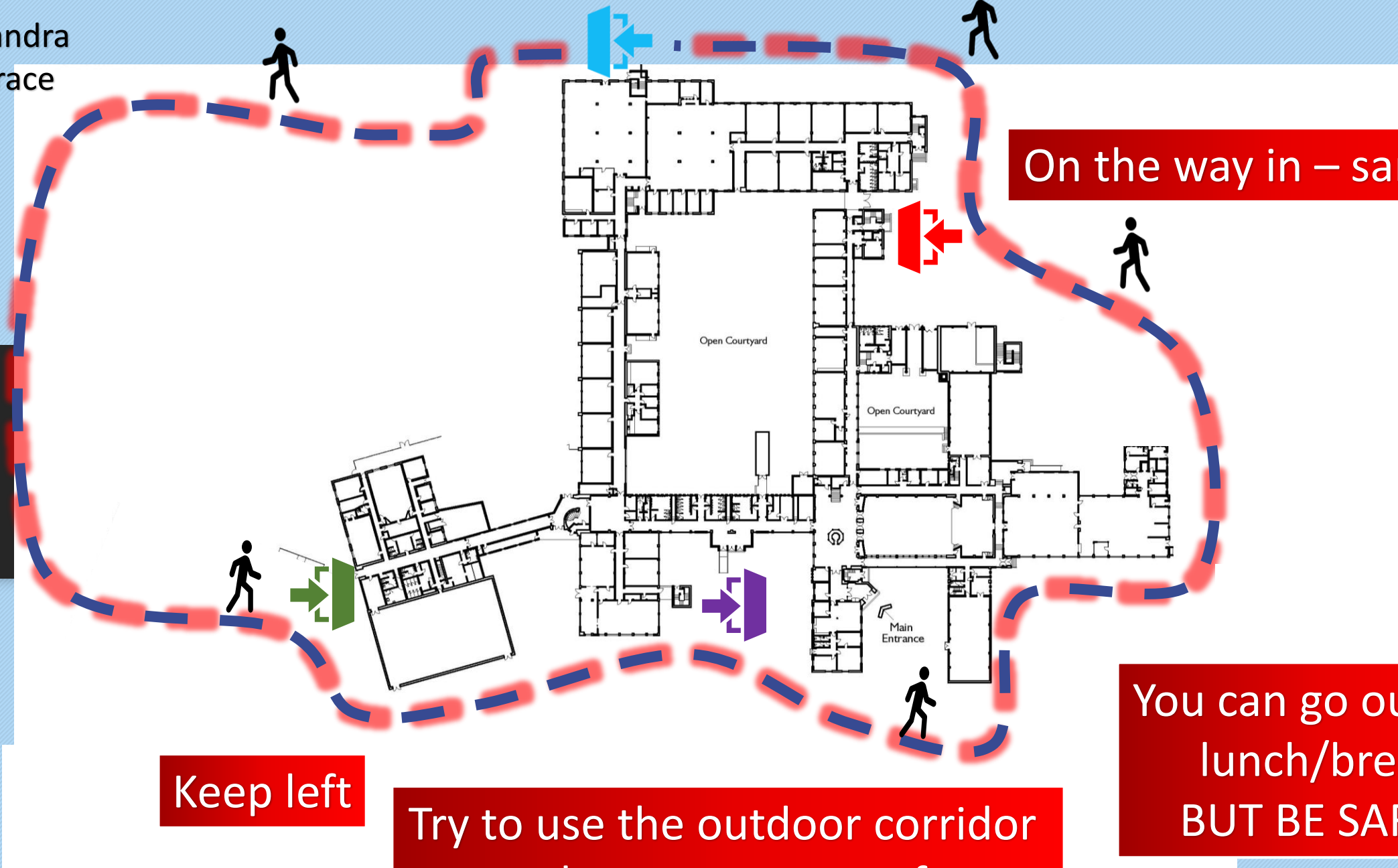
End of period 4 (Before break)	Even numbered classrooms	Leave at 11.25am
	Odd numbered classrooms	Leave at 11.30am
End of period 6 (before lunch)	Even numbered classrooms	Leave at 1.00pm
	Odd numbered classrooms	Leave at 1.05pm
End of period 8 (end of school day)	Even numbered classrooms	Leave at 3.20pm
	Odd numbered classrooms	Leave at 3.25pm

# Arrival and Exit



Choose your entry door based on the subject you are going to.

Alexandra  
Terrace



On the way in – sanitise!

Keep left

Try to use the outdoor corridor  
to keep everyone safe

You can go out for  
lunch/break  
BUT BE SAFE!

# In School



Along with following the health and safety protocols you need to:

- Only use your own materials - don't share
- Keep your distance from other pupils when you can
- Don't come into Physical contact with your friends - DAB!!
- Keep Left in corridors
- Keep to the direction of traffic - anticlockwise

# Catering



To reduce the need for staff to handle cash please ensure that you have your card with you and that it has been topped up online.

From Tuesday the 20<sup>th</sup> of April lunches can once again be ordered using the fusion app. S1-3 will be able to pick up lunch orders from the crush hall while S4-6 pupils can pick up their orders from the social area.

The fusion app will no longer take orders for break. The social area as well as the canteen will be open at break time for pupils to purchase items.

# Transport



**If you will be traveling to school via transport please read the following carefully:**

- Your driver will be wearing a face covering, you must also wear a face covering unless exempt.
- To improve air circulation windows and skylights will be left open.
- The vehicle will have been thoroughly cleaned.
- At some pick-up points you may be required to stand back when the vehicle arrives to allow the driver to exit the vehicle and open the passenger door.
- Make sure you wash or sanitise your hands, before getting on the school bus in the morning. You may carry sanitiser on the bus but you should be careful not to spill it on the vehicle floor.
- Please do not eat or share food or drink on school transport.



# FACTS



## Remember **FACTS** for a safer Scotland

**F**

Face coverings

**A**

Avoid crowded places

**C**

Clean hands regularly

**T**

Two metre distance

**S**

Self-isolate and book a test if you have symptoms

